



Corporate Office:

H-13/14 Everest, 156, Tardeo Road, Mumbai 400034, Maharashtra, India.

Tel: +91-22-23544625 / 27 | Email: info@unihealthonline.com

Web: www.unihealthonline.com | www.umchospitals.com





Connecting the World to
Trusted Care.



“Where Care Comes First”



UniHealth offers unparalleled opportunities for patients to access world-class medical treatments while experiencing cultural immersion, fostering a holistic approach to healthcare. With its commitment to excellence and personalized care, UniHealth seamlessly combines travel and medical expertise to ensure a transformative journey towards wellness for its patients.



**"We are what we repeatedly do...
Excellence, then, is not an act but a Habit"**

Based on the ethos outlined by Aristotle, UniHealth is an idea institutionalized with a purpose to achieve excellence as a habitual compulsion in the field of healthcare. Founded in 2010 in the by-lanes of Kalbadevi, an old South Mumbai business district, the company has, by virtues of its services and out-of-box approach, expanded to having its presence across India and Africa.

Transcending across verticals including Hospitals, Medical Centres, Healthcare Consultancy Services, Hospital Management, Medical Travel and Pharmaceutical & Consumable Distribution and Manufacturing, the Group provides complete healthcare solutions across India and multiple geographies in Africa.

Under its flagship 'UMC Hospitals' brand, the Group presently operates a cumulative bed-strength of 200 tertiary care beds across its facilities in Uganda, Nigeria and Tanzania. The Group is also providing consultancy services for projects, presently under varying operational stages, with a proposed bed-strength exceeding 1,000 beds in India and multiple African countries. UniHealth - UMC Hospitals Group is one of Africa's fastest growing healthcare providers, striding forward to achieve its mission of 'Healthcare for All'. The Group is also expanding its footprint in India across its multiple business verticals, making it an India based multinational healthcare services provider.





CORPORATE PHILOSOPHY



VISION

To be a Global Leader in the Healthcare Industry and provide Effective Healthcare Services



MISSION

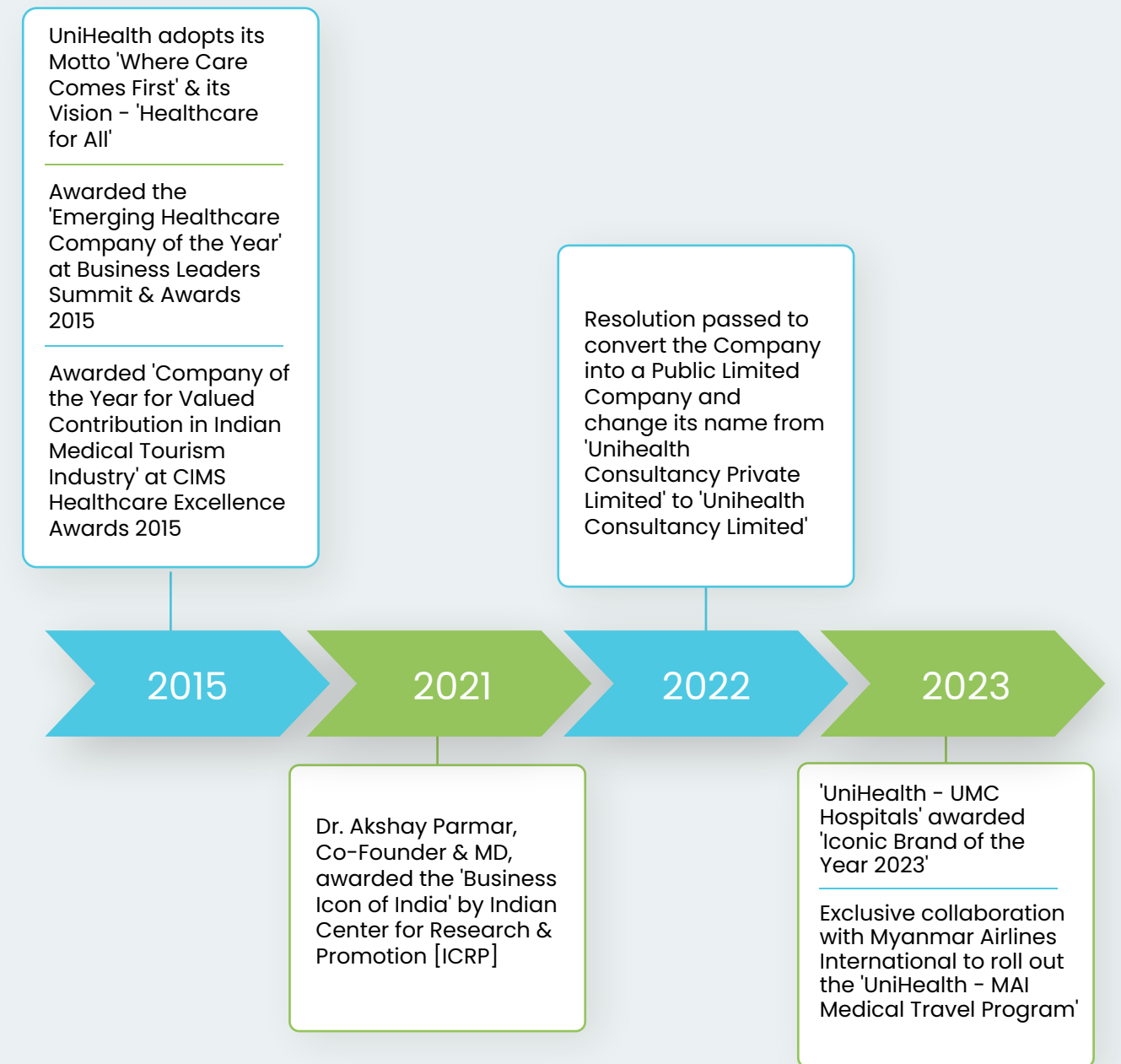
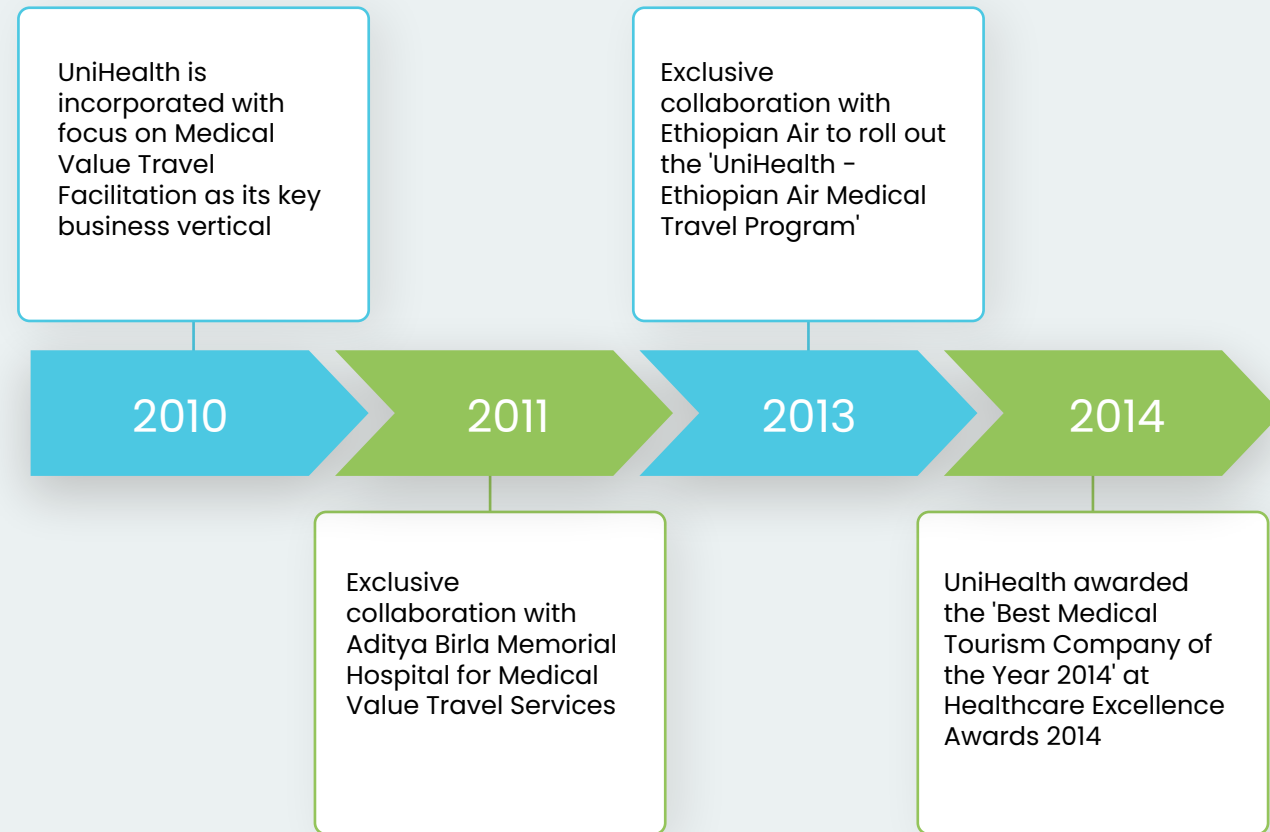
To create value for our customers, employees and society at large



VALUES

- INTEGRITY
- EFFICIENCY
- RESPONSIBILITY
- TRANSPARENCY

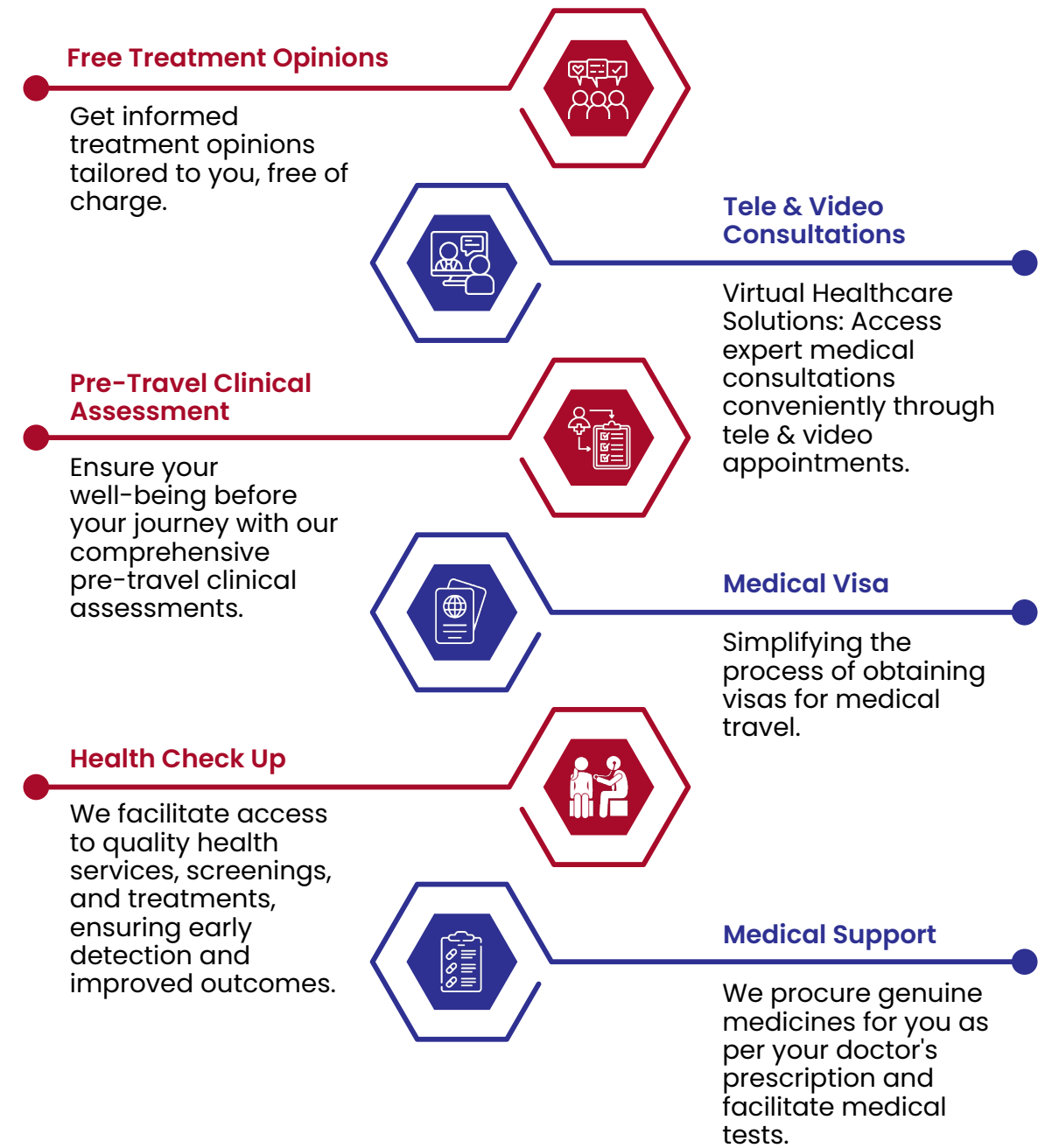
COMPANY MILESTONES



OUR SERVICES

Tailored healthcare services including consultations, treatments and post-operative care, ensuring a seamless journey to wellness

PRE-TRAVEL SERVICES | POST-TRAVEL SERVICES



OUR HOSPITAL NETWORK

| | | | |
|---|---------------------|--|--|
|  | APOLLO HOSPITALS |  | ADITYA BIRLA MEMORIAL HOSPITAL |
|  | JUPITER HOSPITAL |  | KOKILABEN DHIRUBHAI AMBANI HOSPITAL |
|  | ASTER HOSPITAL |  | MAX HEALTHCARE GROUP (BLK) |
|  | FORTIS HOSPITAL |  | RAINBOW HOSPITALS |
|  | MANIPAL HOSPITAL |  | GLENEAGLES GLOBAL HOSPITALS |
|  | RUBY HALL CLINIC | | |



UniHealth – MAI Medical Travel Program

UniHealth Consultancy Limited partners with Myanmar Airways International offering comprehensive Medical Travel Services from Myanmar to India.

This collaboration provides seamless access to world-class healthcare facilities in India for patients seeking specialized treatments.

This exclusive partnership ensures a hassle-free experience, including assistance with medical visas, appointment scheduling, travel arrangements, and post-treatment care.

Patients can expect personalized support throughout their medical journey, benefiting from the expertise of top Indian medical professionals and state-of-the-art healthcare infrastructure.





THE SPECIALTIES. **THE EXCELLENCE.**

UniHealth offers patients access to top-notch and cutting-edge care in the area, spanning a comprehensive array of services across all medical fields. By merging the compassion of human interaction with the effectiveness of technology, each team member is equipped to comprehend the emotional requirements of patients and their families, ensuring empathy remains integral to their service delivery standards.

- Anaesthesiology
- Medical Gastroenterology
- Health Check-up & Wellness
- Bariatric Surgery
- Nephrology
- Rheumatology
- Critical Care Medicine
- Neurology
- Robotic Surgery
- Cardiology/Interventional Cardiology
- Neuro Surgery
- Urology
- Cardiothoracic Surgery
- Nuclear Medicine
- Vascular Surgery
- Dentistry
- Obstetrics & Gynaecology
- Transplant (Liver, Kidney & Heart)
- Dermatology & Cosmetology
- Oncology (Medical & Surgical)
- Travel Medicine
- Dietetics & Nutrition
- Ophthalmology
- Orthopaedics & Joint Replacement
- Diabetology & Endocrinology
- Paediatrics
- Emergency Medicine
- Plastic Surgery
- ENT
- Psychiatry
- General Medicine
- Pulmonology
- General Surgery & Surgical
- Physiotherapy & Rehabilitation
- Gastroenterology
- Proton Therapy
- Haematology

SPECIALIZED PROCEDURES



ORTHOPAEDICS

- Primary & Revisions – Knee Replacements
- Primary & Revisions – Hip Replacements
- Elbow Replacements
- Reverse Shoulder Replacement
- Arthroscopy
- Minimal Invasive Surgeries
- Deformity Correction
- Latarjet Surgery of the Shoulder
- Anterior Cruciate Ligament Reconstruction
- Sports Injury Related Surgeries



SPINE SURGERY

- Microdiscectomy
- Lumbar decompression
- Vertebroplasty or kyphoplasty
- Spinal fusion
- Artificial disc replacement
- Laminectomy
- Scoliosis surgery
- Disc nucleoplasty
- Endoscopic spine surgery
- Discography
- Vertebral augmentation

- Limb Lengthening Surgery
- Complex Trauma Surgeries
- Minimally Invasive Spinal Surgeries
- Complex Spinal Reconstructions
- Spinal Deformity Correction (Scoliosis & Kyphosis)
- Percutaneous Procedures Like Vertebroplasty and Kyphoplasty
- Disc Replacement – Cervical and Lumbar
- Intervertebral Disc Surgeries

- Foraminotomy
- Anterior cervical discectomy and fusion (ACDF)
- Transforaminal lumbar interbody fusion (TLIF)
- Posterior cervical laminectomy and fusion
- Percutaneous laser disc decompression (PLDD)
- Spinal osteotomy
- Corpectomy
- Sacroiliac joint fusion
- Radiofrequency ablation (RFA) for facet joint pain



ROBOTICS

- Robotic-Assisted Total Knee Replacement (TKR)
- Robotic-Assisted Total Hip Replacement (THR)
- Robotic-Assisted Elbow Replacement
- Robotic-Assisted Reverse Shoulder Replacement
- Robotic Arthroscopy
- Robotic-Assisted Deformity Correction
- Robotic Latarjet Surgery of the Shoulder
- Robotic Anterior Cruciate Ligament (ACL) Reconstruction
- Robotic-Assisted Sports Injury Related Surgeries
- Robotic Limb Lengthening Surgery



IN VITRO FERTILIZATION (IVF)

- IVF Treatment
- Intracytoplasmic Sperm Injection (ICSI)
- Preimplantation Genetic Testing (PGT)
- Embryo Cryopreservation
- Frozen Embryo Transfer (FET)
- Blastocyst Culture and Transfer
- Donor Egg IVF
- Donor Sperm Insemination
- Surrogacy
- Assisted Hatching
- Intrauterine Insemination (IUI)
- Ovarian Stimulation Protocols



CARDIOTHORACIC SURGERY

- LVAD
- Heart Transplant
- BIMA Bypass Surgery
- CABG
- Aneurysmal Surgeries

- Robotic Complex Trauma Surgeries
- Robotic Minimally Invasive Spinal Surgeries
- Robotic Complex Spinal Reconstructions
- Robotic Spinal Deformity Correction (Scoliosis & Kyphosis)
- Robotic Disc Replacement
- Robotic Intervertebral Disc Surgeries



TRANSPLANT

- Kidney Transplant
- Liver Transplant
- Heart Transplant
- Lung Transplant
- Pancreas Transplant
- Intestinal Transplant
- Composite Tissue Transplant
- Hematopoietic Stem Cell Transplant (HSCT)
- Living Donor Transplant
- Tissue Typing and Compatibility Testing
- Immunosuppressive Therapy



NEUROSURGERY

- Deep Brain Stimulation (DBS)
- Scoliosis
- Decompression of Cervical and Lumbar Spine Fixation
- Spine Laminectomy Decompression
- Brain Tumor Surgeries
- Epilepsy Surgeries

SURGICAL ONCOLOGY

- Breast Preserving Cancer Surgery
- Breast Oncoplasty & Reconstruction
- Sentinel Lymphnode Surgery
- Cervical, Uterine & Ovarian Cancer Laparoscopic Surgeries
- Hyperthermic Intraperitoneal Chemotherapy (HIPEC)
- Video-assisted Thoracoscopic Surgery (VATS) for Lung Cancer
- Limb Pressuring Surgery
- Bone Tumors Surgery
- Axillary Node Dissection Surgery
- Parotid Swelling Tumour Surgery
- Whipple Procedure Surgery
- Fertility Preserving Cancer Surgeries
- Organ Preserving Surgery After Chemotherapy and Radiation (Breast & Rectal Cancers)
- Laparoscopic Partial Nephrectomy
- Complex Cancer Surgery
- Liver Tumor Resections
- Proton Precision Surgical Care

CARDIOLOGY

- Biventricular Assist Device (BIVAD)
- AICD Implantation
- Coronary Angioplasty (Bifurcation CHIPS, Rotablation)
- Device Closures for CHD (ASD, VSD, PDA)
- Structural Heart Disease (TAVR, TMVR, PBMV) EPS+RFA+3D MAPPING
- Heart Failure Management and Mechanical Circulatory Support (IMPELLA, POBA)
- Cardio Resynchronization Therapy (Pacemakers)
- Trans-catheter Aortic Valve Replacement (TAVR)

PAEDIATRIC CARDIOTHORACIC SURGERY

- Norwood Operation
- Pulmonary Root Translocations
- Repair of Persistent Truncus Arteriosus without Conduit
- Redo Complex Heart Surgeries
- Heart Valve Repair
- Ross Procedure
- Jatene Switch
- Fontan
- Atrial Septal Defect (ASD)
- Ventricular Septal Defect (VSD)
- Patent Ductus Arteriosus (PDA)
- Coarctation of Aorta Surgery
- Interrupted Aortic Arch
- AV Canal Repair
- TOF Repair
- Unifocalization for Pulmonary Atresia
- Arterial Switch Operations

PLASTIC SURGERY

- 360-degree Body Contouring
- Radiofrequency Lipo Contouring
- Tissue Expansion
- Short Scar Gynaecomastia / Chest Contouring
- Breast Reduction – Short Scar
- Gender Reassignment Surgery
- Complex Wound Management and Surgery

GI SURGERY

- Laparoscopic Hernia Surgery
- Weight-loss (Bariatric) Surgery
- Laparoscopic Cholecystectomy
- Laparoscopic GI Laparoscopic Surgeries
- Thyroid Surgery
- Reflux Surgery
- IBD Surgery
- Chronic Pancreatitis – Pancreatico Jejunostomy
- Achlasia Cardia – Heller Myotomy

OBSTETRICS & GYNAECOLOGY

- Myomectomy
- Cystectomy
- Lap Sling Surgery
- Tubal Ligation & Recanalization
- Neovagina Formation
- Stress Incontinence Surgeries
- Laparoscopic Hysterectomy
- Complex Birthing

UROLOGY

- Kidney Transplant (Live and Cadaver)
- Endoscopic Procedures for Renal Calculi (Adult & Children) – URSL/PCNL/CLT
- RIRS + Laser Lithotripsy
- Paediatric RIRS, Mini PCNL
- Thulium Laser Vapoenucleation of Prostate- BipolarTURP (laser Prostatectomy)
- Uro-Oncology (Kidney, Bladder, Testicular Cancer, Penis)
- Reconstructive Lap. Pyeloplasty/ Ureterocalicostomy, Ureteric Reimplantation
- Stricture Urethra – VIU (Visual Internal Urethrectomy)

and many more...

UNIHEALTH

MEDICAL ASSISTANCE JOURNEY



RECEIVE EXPERT OPINIONS & COST ESTIMATES

Share your medical needs with us. Our expert network provides personalized opinions and cost estimates.

ARRIVE IN INDIA WITH CONFIDENCE

From airport pickups to transportation, we ensure a smooth transition to your healthcare facility.

RECOVER AND POST-TREATMENT CARE

We continue to support you through the recovery phase. We schedule post-treatment checkups and provide assistance with any ongoing medical needs.



REACH OUT TO US

Begin your journey by contacting us online or drop us an email at info@unihealthonline.com. Our team is here to assist you every step of the way.



SEAMLESS VISA APPOINTMENT & ACCOMMODATION ARRANGEMENTS

When you're ready, we manage all paperwork and logistics for your visa and arrange comfortable accommodations within your budget.



COMPREHENSIVE TREATMENT & LOGISTICS MANAGEMENT

Our team coordinates appointments, medication and more, so you can concentrate on your health.



RETURN HOME HEALTHIER AND HAPPIER

Leave India with improved health and positive memories. Our goal: your happiness and satisfaction as you return home.



Pioneering Healthcare Excellence for Your Well-being

Innovative Solution For Superior Care

Experience superior care with our innovative solutions. We pride ourselves on pioneering approaches that elevate healthcare standards. From state of the art technology to compassionate staff, we're dedicated to optimizing your well-being.

Leading The Way In Healthcare Excellence

Discover unparalleled healthcare excellence with us. Our commitment to innovation, compassion and expertise ensures you receive the highest standard of care. From cutting-edge treatments to personalized attention, we lead the way in delivering exceptional healthcare services.



FAQS

Q: How can I send my medical records, imaging and other relevant information to UniHealth?

A: You can securely upload all your documents through our website or send them via email on info@unihealthonline.com.

Q: What is the process for medical visa?

A: Please share the passport copy of the patient and attendant on info@unihealthonline.com and you will get a visa invitation letter on an immediate basis.

Q: Who will assist me with local arrangements during my medical trip?

A: Our dedicated relationship manager will oversee all your local arrangements, ensuring smooth airport transfers, securing accommodation bookings, arranging for language translation services and addressing any other specific needs you might have.

Q: Where can my family and friends stay while I undergo treatment arranged by UniHealth?

A: UniHealth can arrange accommodation for your family and friends in comfortable and convenient locations near the medical facility where you will be receiving treatment.

Q: Will there be language assistance available at the medical facility?

A: Our staff members are proficient in English and we also provide language translation services to ensure effective communication with medical professionals and staff.

Q: What documents should I bring with me when traveling for medical treatment through UniHealth?

A: Please ensure you bring all relevant medical reports, identification documents, passport and visa.

Q: Will I get food made as per my taste and preferences?

A: Our Food and Beverage team specializes in a variety of international cuisines, ensuring that every meal is customized to your specific tastes and preferences.

Q: What is the post-discharge follow-up process provided by UniHealth?

A: UniHealth remains committed to supporting you even after your discharge. You can reach out to us via email or phone for any post-treatment queries or follow-up assistance you may require.